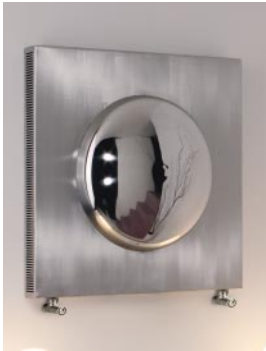


Boreas Radiator



Depth (d)

Height (h)

Centres (c1)

Width (w)

Product Code (Heating Only)	Height (mm) (h)	Width (mm) (w)	Depth (mm) (d)	Wall to Face (mm)	Tapping Centres (mm)			Output (watts)	Dry Weight (Kg)	Water Content (ltrs)	Product Codes (Electric) *2				Estimated delivery *1
					(c1)	(c2)	(c3)				HE	E	POL1 - HE	POL1 - E	
BOR031070070	700	700	142.5	190	555	80	n/a	1253	32.57	4.34	n/a	n/a	n/a	n/a	L

• Available finishes = Brushed (03) (with polished inserts)

Notes:

• Max operating pressure 6 bar • All connections 1/2" BSP • Manufactured from steel with stainless steel casing

*1 Note: Lorry delivery only : up to 10 working days

*2 Note: Fully electric option not available for this product

Dimension detail (mm)				Heating Only		Dual Fuel		Electric Only		Dual Fuel - Thermostatic POL1		Electric Only - Thermostatic POL1	
Height (h)	Width (w)	Depth (d)	Output @ Δt 60°C	Code	Price £ excl. VAT	Code	Price £ excl. VAT	Code	Price £ excl. VAT	Code	Price £ excl. VAT	Code	Price £ excl. VAT
700	700	142.5	1253	BOR 03 1 070070	1173.00	n/a	n/a	n/a	n/a	n/a	n/a	n/a	n/a