

Space

Installation Guide

Main Material of Manufacture - Steel



Attention The connection of this rail to a central heating system should be carried out by a suitably competent person who is familiar with current regulations.

Read this guide before starting installation and retain for future reference

Handling Advice

Please consider manual handling guidelines when handling this product to ensure the risk of injury to yourself / others or any damage is minimised.

Water Treatment

These products are for use on closed heating systems only; they are **NOT** suitable for installation on secondary HWS circuits.

On completion of the installation the entire system **MUST** be thoroughly cleaned and flushed to remove debris/flux residues etc. If a chemical cleanser is used, it must be thoroughly flushed from the system. Following this, the system **MUST** be dosed with a good quality water treatment to prevent corrosion. System design, flushing and dosing must be in accordance with BS 5449: 1990, BS EN 12828: 2003 and BS 7593: 1992

IMPORTANT: Failure to observe these requirements will render the guarantee on the product void.

Corrosion inhibitor must be used in accordance with the manufacturer's instructions and recommendations and should take into account the particular metals within the system.

Cleaning & Aftercare

For chrome or white finishes, clean using a damp cloth (dipped in water), DO NOT use solvents or detergents.

Operating Pressure

Max. Operating Pressure 8 bar (test 10.4 bar)

Further Information

This rail has been designed, manufactured and tested to ensure a long-lasting use. Should you require any further information, help or advice, or have any difficulties with these products or their installation and use, please contact our office on:

Tel: **01268 546700** Fax: **01268 888250**

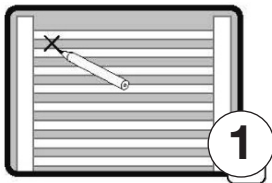
Web: **www.mhsradiators.com**

write to: 3 Juniper West, Fenton Way, Southfields Business Park, Basildon, Essex SS15 6SJ

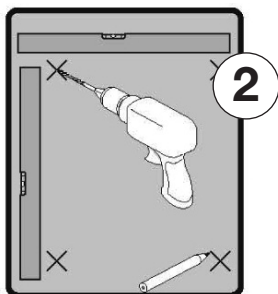


Installation Instructions

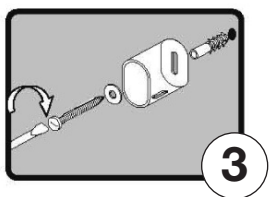
Remove the rail from its packaging and check for quality, once satisfied:



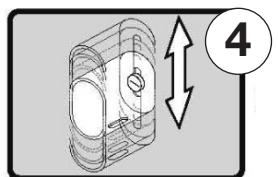
1 Accurately mark out a bracket position on the wall.



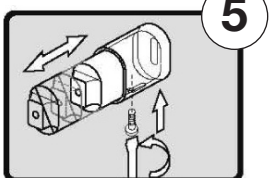
2 Taking the first marked point on the wall as a reference point, measure and mark out the other fixing points with a spirit level. Drill holes and insert the wall plugs.



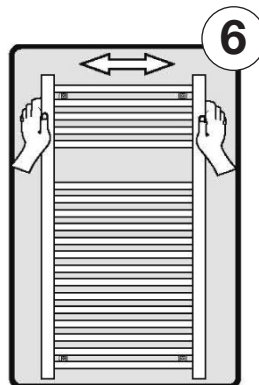
3 Install the wall bracket into wall plug using the screw ensuring that the slot at the back of the wall bracket is facing the wall and leveled vertically.



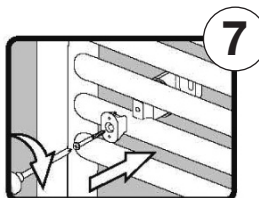
4 Minor adjustment is possible in the vertical plane.



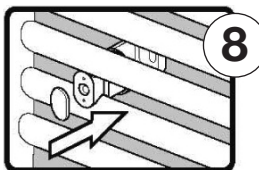
5 Insert the telescopic bracket into the wall bracket. Screw the pieces together as displayed.



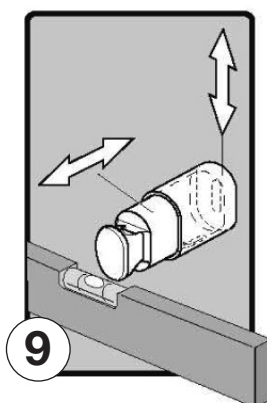
6 Once all the brackets are mounted offer the rail into position, check and adjust levels as required.



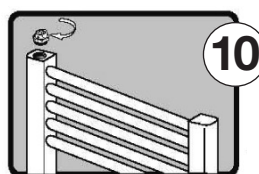
7 Now fit the front retainer and tighten (do not overtighten as this could distort or break the bracket)



8 Press the caps into place



9 If there are any minor levelling issues the brackets are flexible in two dimensions.



10 Fit the air vent and plug and connect the radiator to your system via a pair of valves.

Tip: It may be more convenient to fit the valve tails before mounting the rail.

NOTE TO INSTALLER: PLEASE LEAVE THESE INSTRUCTIONS WITH THE HOUSEHOLDER