

Alara

Installation Guide

Main Material of Manufacture - Stainless Steel



Attention The connection of this radiator to a central heating system should be carried out by a suitably competent person who is familiar with current regulations.



Read this guide before starting installation

Handling Advice

Please refer to the manual handling guidelines that are supplied with this product. This gives important information about the safe lifting of these radiators to minimise risk and damage.

Water Treatment

These products are for use on all heating systems.

On completion of the installation the entire system **MUST** be thoroughly cleaned and flushed to remove debris/flux residues etc. If a chemical cleanser is used, it must be thoroughly flushed from the system. Following this, the system **MUST** be dosed with a good quality water treatment to prevent corrosion. System design, flushing and dosing must be in accordance with BS 5449: 1990, BS EN 12828: 2003 and BS 7593: 1992

IMPORTANT: Failure to observe these requirements will render the guarantee on the product void.

Corrosion inhibitor must be used in accordance with the manufacturer's instructions and recommendations and should take into account the particular metals within the system.

Cleaning & Aftercare

The external surface of the radiator should be cleaned with mild detergent. No solvents or abrasives should be used.

Operating Pressure

Maximum 6 bar

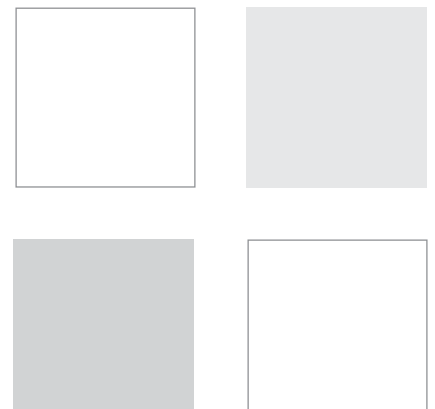
Further Information

These radiators have been designed, manufactured and tested to ensure a long-lasting use. Should you require any further information, help or advice, or have any difficulties with these products or their installation and use, please contact our office on:

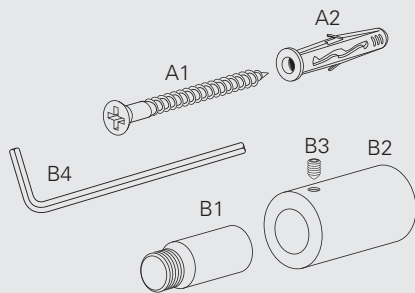
Tel: **01268 546700** Fax: **01268 888250**

Web: **www.mhsradiators.com**

write to: 3 Juniper West, Fenton Way, Southfields Business Park, Basildon, Essex SS15 6SJ



Installation Instructions



Installation Accessories:

- A1** - 4 x Wood screws
- A2** - 4 x Wall plugs
- B1** - 4 x Inserts
- B2** - 4 x Bracket sleeves
- B3** - 4 x Grub screws
- B4** - 1 x Allen key

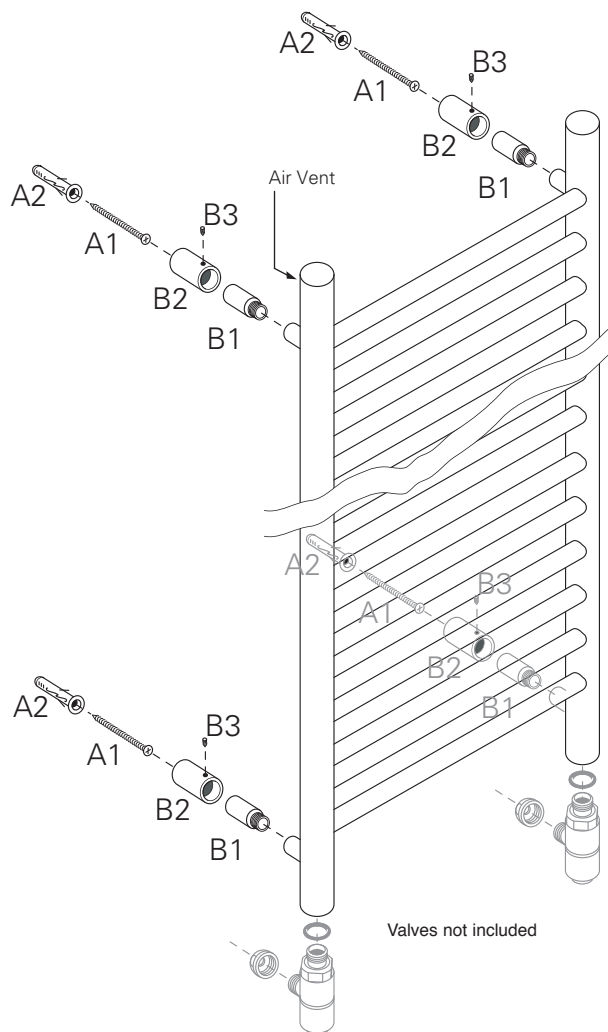
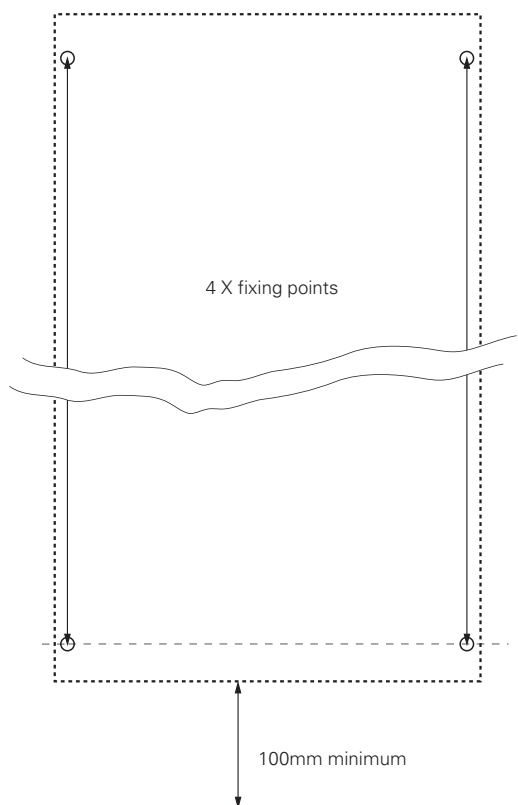
Preparation:

Before fitting the Alara towel rail, please ensure all components shown in this guide are complete. The pre-fitted air vent is located on the rear of the vertical header.

Mounting the Towel Rail:

- 1:** Screw the 4 X inserts (B1) onto the nuts welded on the back of the radiator. Slide 4 X bracket sleeves (B2) onto Inserts and secure with grub screw (B3) ensuring grub screw positioned at top. (**Fitting option** - remove B1 insert for a closer fit)
- 2:** Site the unit and place assembled rail against wall. This rail should not be mounted closer than 50mm below an overhanging surface (i.e. shelf) and no lower than 100mm above the floor. Ensure the rail is square and using a pencil, lightly mark a circle around the position of each bracket sleeve.

- 3:** Remove the unit, place a bracket sleeve over each of the circles marked previously and mark the centre for screw position, drill and insert wall plugs (or other suitable fixings)
- 4:** Insert supplied screw through bracket sleeve and fasten bracket sleeves. Position rail with (or without) inserts then tighten the grub screws (grub screws should be positioned out of line of sight if possible).



2 X 1/2" bsp-f downward facing connections