

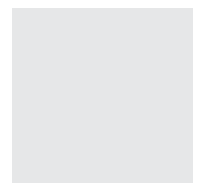
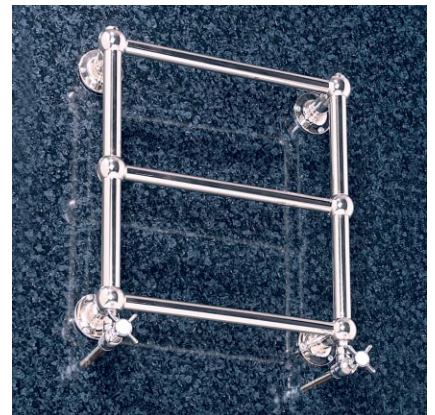
Empire

Installation Guide

MHS
RADIATORS

Main Material of Manufacture - Steel

Attention The connection of this radiator to a central heating system should be carried out by a suitably competent person who is familiar with current regulations.



Read this guide before starting installation

Handling Advice

Please refer to the manual handling guidelines that are supplied with this product. This gives important information about the safe lifting of these radiators to minimise risk and damage.

Water Treatment

These products are for use on closed heating systems only; they are not suitable for installation on secondary HWS circuits.

On completion of the installation the entire system MUST be thoroughly cleaned and flushed to remove debris/flux residues etc. If a chemical cleanser is used, it must be thoroughly flushed from the system. Following this, the system MUST be dosed with a good quality water treatment to prevent corrosion. System design, flushing and dosing must be in accordance with BS 5449: 1990, BS EN 12828: 2003 and BS 7593: 1992

IMPORTANT: Failure to observe these requirements will render the guarantee on the product void.

Corrosion inhibitor must be used in accordance with the manufacturer's instructions and recommendations and should take into account the particular metals within the system.

Cleaning & Aftercare

The external surface of the radiator should be cleaned with mild detergent. No solvents or abrasives should be used.

Operating Pressure

Maximum 6 bar

Further Information

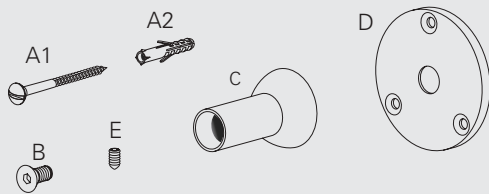
These radiators have been designed, manufactured and tested to ensure a long-lasting use. Should you require any further information, help or advice, or have any difficulties with these products or their installation and use, please contact our office on:

Tel: **01268 546700** Fax: **01268 888250**

Web: **www.mhsradiators.com**

write to: 3 Juniper West, Fenton Way, Southfields Business Park, Basildon, Essex SS15 6SJ

Installation Instructions



Installation Accessories:

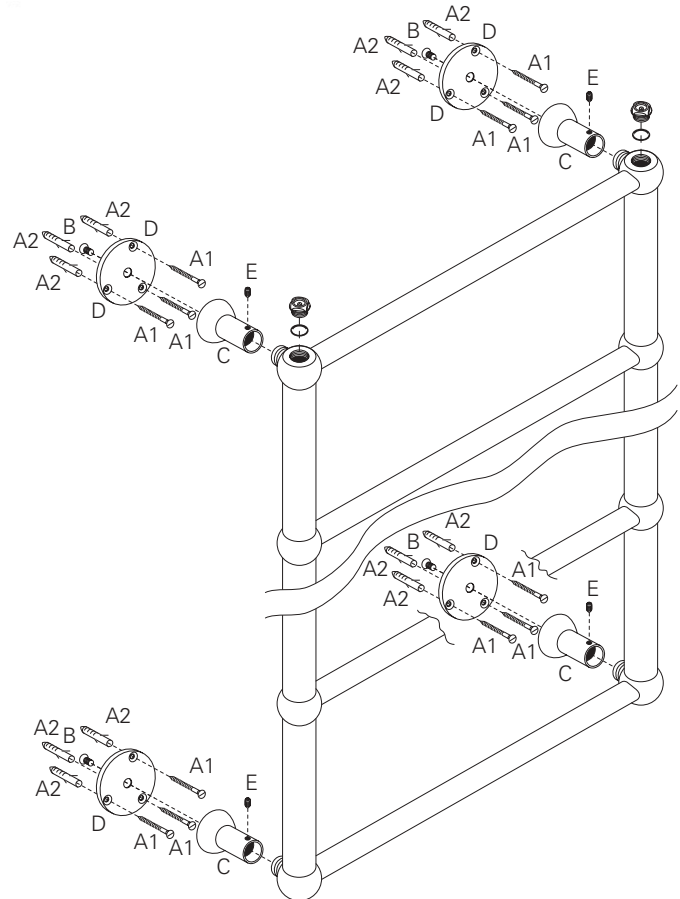
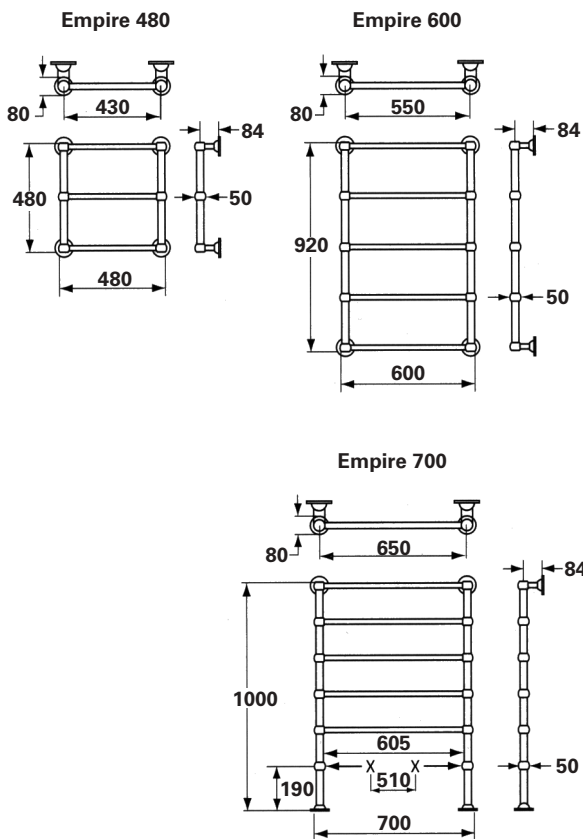
- A1)** 12 Nr Plated wood screws
- A2)** 12 Nr Wall Plugs
- B)** CS Machine Screws
- C)** Spacer Assembly
- D)** Wall Mounting Rosette Plate
- E)** Grub Screw

Preparation of Radiator

- 1:** Install air vent, plug and radiator valves into the appropriate tapings on the towel rail. Note: The Empire series towel rails are suitable for *BBOE and *TBOE system connections only.
- 2:** Prepare the wall mounting supports by attaching the rosette plates (D) to the spacer assemblies (C) using machine socket head machine screws (B).
- 3:** Temporarily attach the spacer and rosette plate assemblies to the attachment stubs on the rear of the towel rail and secure using grub screws (E). secure using grub screws (E).

Mounting the towel rail

- 1:** At the chosen installation position, offer up the towel rail (ensuring product is level), and mark the fixing positions on the wall (and floor as appropriate).
- 2:** Drill the wall/floor using a 12mm bit and insert the wall plugs.
- 3:** Detach the spacer and rosette plate assemblies from the attachment stubs and fix the rosettes to the wall using screws(A1)
- 4:** Offer up the towel and secure the spacers to the attachment lugs and if floor standing model, secure also the foot rosette plates to the floor using screws (A1).



* BBOE = Bottom-Bottom Opposite End Connections

* TBOE = Top-Bottom Opposite End Connections